



Lambda Philatelic Journal

PUBLICATION OF THE GAY AND LESBIAN HISTORY ON STAMPS CLUB, JUNE 1999, VOL. 18, NO. 1



What is the philatelic connection of this building?
See page 6.

**Famous People and Events of the Twentieth Century
Famous Composers and Playwrights**

<p>THE GAMBIA D4</p>	<p>GAMBIA D4</p>	<p>THE GAMBIA D4</p>	<p>THE GAMBIA D4</p>
<p>THE GAMBIA D4</p>	<p>THE GAMBIA D4</p>	<p>THE GAMBIA D4</p>	<p>THE GAMBIA D4</p>

**1893-1964
Cole Porter**

One of the most popular American song composers in the era following the First World War, Cole Porter composed both the words and music to the sophisticated songs and musical comedies he created. Among his best remembered popular songs were "Anything Goes," "Kiss Me Kate" and "Can-Can." Porter wrote the filmscore for the 1956 motion picture "High Society".

**1898-1937
George Gershwin**

A great American composer born in Brooklyn New York, George Gershwin wrote many popular songs and experimented with "Symphonic Jazz". His most famous work *Rhapsody in Blue* (1924) for piano and orchestra is one of the most popular pieces of the 20th century. Working together with his lyricist brother Ira Gershwin, George also wrote such influential works as "Porgy & Bess", "An American in Paris" and "The Piano Concerto in F".

**1895-1960, 1902-1979
Hammerstein & Rodgers**

Oscar Hammerstein II (1895-1960) and Richard Rodgers (1902-1979) teamed up to create some of the best song compositions on the Broadway musical stage. Hammerstein was the lyricist who came up with the words while Rodgers composed the music. Among their classic collaborations were "Oklahoma!", "South Pacific", "The King and I" and "The Sound of Music".

**1918-1990
Leonard Bernstein**

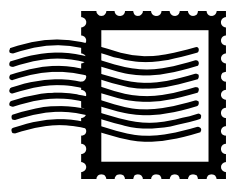
One of the greatest and most animated musical conductors and composers of the 20th century, Leonard Bernstein was from 1958 until 1969 the legendary conductor of the world famous New York Philharmonic Orchestra. He also composed many great classical compositions such as the Ballet "Fancy Free" and the Symphony "Jennich". Bernstein is however best remembered for composing the music for the popular Broadway musical "West Side Story".

Gambia, Scott no. 2050
Featuring two gays and their work: Cole Porter and Leonard Bernstein.
See page 9 for more information.

The *Lambda Philatelic Journal* is published quarterly by the Gay and Lesbian History on Stamps Club (GLHSC). GLHSC is a study unit of the American Topical Association (ATA), Number 458; an affiliate of the American Philatelic Society (APS), Number 205; and a member of the American First Day Cover Society (AFDCS), Number 72.

The objectives of GLHSC are to promote an interest in the collection, study and dissemination of knowledge of worldwide philatelic material that depicts:

- ▼ Notable men and women and their contributions to society for whom historical evidence exists of homosexual or bisexual orientation,
- ▼ Mythology, historical events and ideas significant in the history of gay culture,
- ▼ Flora and fauna scientifically proven to having prominent homosexual behavior, and
- ▼ Even though emphasis is placed on the above aspects of stamp collecting, GLHSC strongly encourages other philatelic endeavors.



GLHSC OFFICERS:

President..... Angela Watson
 Vice President Brian Lanter
 Secretary..... Vacant
 Treasurer Judith Beckett
 Editor..... Joe Petronie

ADDRESSES:

Lambda Philatelic Journal
 PO Box 515981
 Dallas TX 75251-5981
 USA

GLHSC@earthlink.net (President)
 GLHSC@aol.com (Editor)
 Web-site: <http://home.earthlink.net/~glhsc/index.html>

The *Lambda Philatelic Journal* thrives on philatelic articles, original or reprinted, and alternative viewpoints for publication. The editor reserves the right to edit all materials submitted for publication. The views expressed in the journal are those of the writers and do not necessarily represent those of the Club or its members. Any comments should be addressed to the Editor at one of the addresses listed.

MEMBERSHIP:

Yearly dues in the United States, Canada and Mexico are \$8.00. For all other countries, the dues are \$10.00. All checks should be made payable to GLHSC.

There are two levels of membership:

- 1) Supportive, your name will not be released to APS, ATA or AFDCS, and
- 2) Active, your name will be released to APS, ATA and AFDCS (as required).

Dues include four issues of the *Lambda Philatelic Journal* and a copy of the membership directory. (Names will be withheld from the directory upon request.)

ADVERTISING RATES:

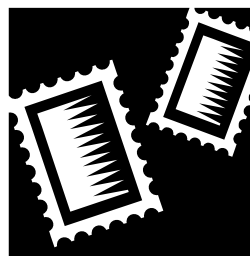
Members are entitled to free ads.

Non-members can place ads for \$10 per issue. Reproducible ads should be submitted, along with a check made payable to GLHSC, to the editor's address. Ads should be no larger than 1/4 page. Any ad submitted without artwork will be created by the editor and at the editor's discretion.

PUBLICATION SCHEDULE:

<u>Publication Date</u>	<u>Articles Needed by</u>
September 1999	August 15, 1999
December 1999	November 15, 1999
March 2000	February 15, 2000
June 2000	May 15, 2000

All artwork and articles should be received by the editor no later than the end of the month prior to publication for inclusion in that issue. The membership directory will be published in the first quarter.



News From the Editor

▼ Towards the end of last year, I decided that my other half and I should separate for awhile. He had interviewed for a job in Washington, DC. Once it looked like he would get the job, I had to do some soul searching. Though I would love to get back to the DC area, I decided to stay in Dallas for awhile longer. He left on January 1, to begin work on January 4. I remained in the house with the two children, I mean cats.

The house finally sold the end of March. Unfortunately, it didn't give me much time to find a new place to live. I had a meeting in Tucson a week or so before we had to vacate the house. Larry packed up his belongings the weekend after I returned from Tucson, taking the computer and children with him.

To make a long story even longer; trying to sell a house, move, find a new place to live, travel for work and figure out what one should do in life doesn't leave much time for putting together a journal!! I hope to get back on track with this issue!

▼ Once again, I am running low on articles for the journal. I had planned to make this a double issue. However, if I printed all the articles that I currently have, I would not have any for the September issue. **I need the help of ALL members.** Send me anything on your favorite stamps, postmarks, country, topic, etc. It would be extremely helpful if you could send it on a 3.5 inch diskette. (Either a text, Publisher 98 or Word 97 file will do. Graphics should be either TIFF or JPEG files.) If you can convert your graphics, please send

the originals that you would like to include with your article. I can scan them for you, returning after publication. Of course, you can e-mail the article and graphics to me at the address on page 2.

- ▼ On a related matter, I could use a few more member profiles. Again, be sure to include any stamps, covers or whatever that you would like to accompany your bio.
- ▼ The 1999 Directory should be in the mail shortly. Sorry for the delay.

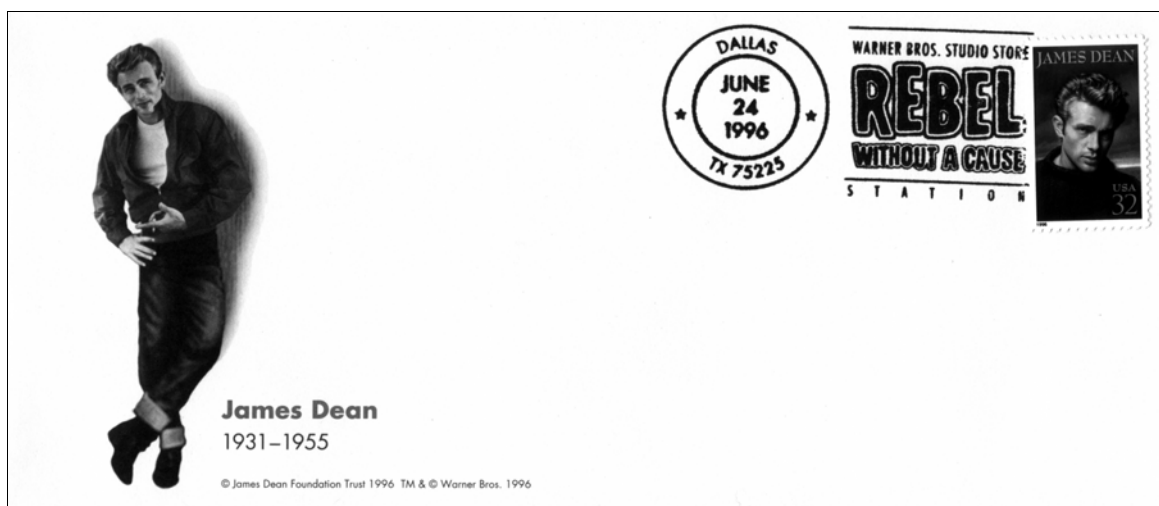
GLHSC On-Line

Thanks to the hard work of our President, Angela Watson, GLHSC has home on the web! This site is just a beginning. If you would like to help further expand the site, please send Angela an e-mail. The GLHSC site can be found at:

<http://home.earthlink.net/~glhsc/index.html>

It is hoped to add several pages to the site soon. We would like to include portions, if not all, of Paul Hennefeld's award winning exhibit, an index to past issues of the journal and a current listing of gays, lesbians, bisexuals and their works on stamps, postmarks and other philatelic materials.

Be sure to visit the site and let us know what you think. We are open to any and all suggestions or ideas for the site. To make the site easier to access, should the club consider purchasing a domain name for the site? The registration fee is \$70 for a two year period, with annual fees of \$35 beginning in year three.



One of several available FDC, Scott no. 3082

Centennial of the Great Poet Federico Garcia Lorca

by Juan Franco Crespo

Federico Garcia Lorca was born on June 5, 1898, in Fuente Vaqueros, a small village in the fertile valley of Granda (La Vega). His parents were well-to-do; his father, Federico Garcia Rodriguez, was a landowner and his mother, Vincenta Lorca Romero, was a school teacher. As compensation to Spain during the year marking the end of the Spanish Colonial Empire, Spain received a child who later gave it more fame and renown than all of its wars and conquests combined.

When Lorca was 11 years old, he moved with his family to live in Granada, where he eventually studied piano. He received his General Certificate of Education and began to study law as well as arts and philosophy at university. In 1917, Lorca saw the publication of his first text, *Symbolic Fantasy*. A year later, *Impressions and Landscapes* was published in a modernist style with childhood memories of an excursion through Castille and Andalusia.

In 1919, he moved to Madrid to continue with his studies. There he lodged in the famous Residencia de Estudiantes. He made friends with a group of intellectuals who stood out for their avant-garde attitudes in different fields of art: Luis Buñuel, Salvador Dali and Pepin Bello, amongst others. Lorca's passion for literature was made evident quickly in the numerous works he had published. These works were very successful. He was a friend of Manuel de Falla, participating with him in 1922 in the organization of the Festival de Cante Jonde (Andalusian folk song festival, traditional style flamenco singing from the Spanish gypsy) in Granada. Falla guided Lorca in the music and lyrics of his *Poema de Cante Jonde*.

Poet of matchless ingenuity, Lorca's life and work are an example of the Spanish peoples telluric grace. None like him has assumed Andalusia's popular traditions, raising them to an aesthetic category never before reached. In him, like a marvelous melting pot, culture and folklore, traditions and avant-garde are mixed to give us the great poet who is a paradigm of Spanish-American literature. Lorca's theater is his poetry's son because it constitutes its conflicts and characters' dramatization, but his tragedies in turn revolutionized the theater of his time and laid the foundation for its further evolution. Lorca collaborated in different poetical publications such as "Horizonte", "Indice" and "Litoral." He was also in contact with other colleagues of his generation, such as Rafael Alberti, Pedro Salinas and Manuel Altoaguirre. *Mariana Pineda* was written in this period and had its premier in Barcelona on June 24, 1927. The play deals with the tragedy of the heroine from Granada who was sentenced to death at the garrote for defending the liberal cause. During the play's run in Granada in 1929, starring the actress Margarita Xirgu, Lorca stated, "If one day God continues helping me and I am famous, half of this fame will be for

Granada, cradle and model for this creature who I am: born and bred a poet."

In 1929, Lorca traveled to the United States with the politician Fernando de Los Rios. He wrote his famous book, *A Poet in New York*. A feverish, creative activity was unleashed in the poet, maybe to counteract the affective and existential crisis he was suffering at the time. The blacks in "Ode to the King of Harlem" have obvious unpleasant reminiscences of the gypsies, and we can see a dark and gloomy world in "The Abandoned Church." While in Cuba, Lorca gave some talks and poetry readings. He also wrote *El Público* and *Así Que Pasen Cinco Años*.

When the second Republic was proclaimed, Garcia Lorca identified himself with its cultural project. He was entrusted with the direction of La Barraca (the thatched house), a university travelling theater company whose mission was to perform classical plays in villages and towns. Among his vast lyrical work, we cannot forget his *Romancero Gitano* (collection of gypsy ballads.) He wrote, "The gypsy is the most noble, the most aristocratic of my country, the most representative of its way of being; the people who maintain the spirit, the blood and the essence of the real and universal Andalusian." Another work, *Llanto por la muerte de Ignacio Sánchez Mejías*, was inspired by the death of his great friend and bullfighter. Among his plays, we must mention *Bodas de Sangre*, *La Casa de Bernarda Alba*, and *Doña Rosita la Soltera*.

Moved by the most fundamental instincts which rise from within, naturally and irresistibly, irrational and shrouded in the fatality of centuries, and at the same time suppressed by the ethical values of the society in which they live, the characters in these plays of Lorca are engendered by the classical tragedies. Men and women do not act, but are archetypes of human passion and sentiment: love, jealousy, sex, life, death.

As an intellectual of his time, Lorca was always in favor of progressive ideas and the defense of the dispossessed and marginalized people. His stance on the side of the Republic, his humanistic ideas and his work intended to bring culture to humble people turned him into a target of fascist reaction. Federico Garcia Lorca was shot and killed in Viznar, Granada on August 19, 1936. After his death, Lorca became a symbol of the intellectual committed to social justice and more authentic human values.

Antonio Machado cried: "The crime was in Granada, you know, poor Granada! In HIS Granada..."

Resources:

Catalogue from the World Philatelic Literature Exhibition, Lorca '98, Granada, June 2-7, 1998.

Press release from the Philatelic Services, Madrid and La Habana.

Archives of the author.

About the author:

Juan Franco Crespo lives in Barcelona, Spain. He is a teacher in primary school and a regular contributor to the Spanish Philatelic Press. He is the author of *Cien Años de Radio, Centenario de Marconi* (Centennial of the radio), which is also his thematic collection. Letters to Juan Franco Crespo, PO Box 674, E-08080 Barcelona, España.



Cuban First Day Cover, Scott no. 3928.

Pride's Mailbox

Pride's Mailbox is an international educational exhibit of gay, lesbian, bisexual and transgender commemorative pictorial postmarks commissioned by United States or foreign postal authorities in recognition of specific gay, lesbian and bisexual pride events. **Pride's Mailbox** is a privately owned and funded collection of historic G.L.B.T. pictorial cancellations made available free of charge for public, educational exhibitions. The collection currently hosts more than 50 pictorial postal cancellations and continues to grow as G.L.B.T. commemorative postmarks are created world wide. Each series or individually commissioned commemorative postmark has been artfully framed including a brief description reflecting the historical G.L.B.T. event for which the postmark was designed and commissioned.

Pictorial commemorative cancellations (special postmarks) have been a great way to celebrate special events to include philatelic interests. As a community benefit, U.S. and foreign postal services have offered pictorial cancellations to commemorate local events and expand their celebration throughout the world. Individuals associated with the spe-

cific events draft a cancellation design and submit it with an application in accordance with postal regulations. Upon acceptance of an application, postal services establish an "on site" mobile unit, which acts as a post office during the specified date(s) of each event. In the United States, pictorial postmarks remain available for a 30 day period following the authorized cancellation date and may be obtained during this period by written request to the postmaster of the city of commission. **Pride's Mailbox** calls to mind these important and historic gay/lesbian/bisexual/transgender events.

Pride's Mailbox is available for loan exhibition to colleges, public libraries, community centers and other public educational facilities. To schedule an exhibition, call (860) 763-2675. James E. Klopfer is the creator and curator.



What About Lincoln?

Writer-activist Larry Kramer gave a speech in Wisconsin in February previewing his next book, *The American People*. In a chapter on Abraham Lincoln, Kramer quotes from the diaries and letters of Lincoln's life-long friend, Joshua Speed. Speed and Lincoln shared a house and bed for four years in Illinois. In May, the online magazine *Salon* ran a story asking whether Lincoln was gay.

Back in 1982, while researching famous people to place in a student union display case at LSU, I also found a few references to the fact that after Abe married, Mary Todd Lincoln refused to allow Speed near Lincoln. Unfortunately, the copies of these references have been lost.

What do you think about this? If true, or even if he was what could be considered bisexual, just think of the stamps, related cancellations and other philatelic material that could be added to your gay, lesbian, bisexual and transgender collection!

GLHSC Member Profile

By Jerry Adams

I have been thinking about doing this for some time. So today, with winter raging at this rural northern prairie farm, I'll attempt a profile.

I grew up on a grain and livestock farm near Warwick, which is southeast of Devils Lake. I graduated from Junior college there in 1962. The city of Devils Lake is where the one room country school house is located that was depicted on the 30 cent value of the Americana series. It is now used for a tourist information center.



Scott no. 1504



Scott no. 1606

After college, I worked for the state highway department on a survey team from the International Peace Gardens south to Dunseith. The Peace Gardens were originally built by the Civilian Conservation Corps (CCC). After a short time in Oregon, the farmer in my blood was strong. I soon returned to North Dakota, starting my career in farming and ranching. I also worked part-time for ASCS which is now known as the Farm Service Agency (FSA).



Scott no. 2014



Scott no. 2037



Scott no. 2403

Today, I have my own ranch and love the life, the wildlife, nature, animals, the solitude at times, and yes, even the hard work, pressure and risk. However, if I want a day off, I take it; if I see that perfect picture, I get my camera; if I want to stop and smell the roses, I loiter in my garden.

I started collecting used United States stamps in grade school. As time went on, my collecting interests went to US plate blocks, coil strips, Canada and Mexico. Then, I moved onto the topics of cattle/buffalo, male nudes that I could find and state ducks. I've never been a die hard, have to have every one, collector. I stick to what I can afford after 1940. Through stamps, I discovered the wonderful world of gay penfriends worldwide and GLHSC. Other hobbies that I have are photography, gardening and noticing all the guys. I especially like all the statehood stamps. My favorite 1998 stamp is Wisconsin statehood. My favorite foreign country is Canada.

Peace from the Dakota Prairies

Postmark Commemorates 19th Annual Pride Celebration for Baltimore



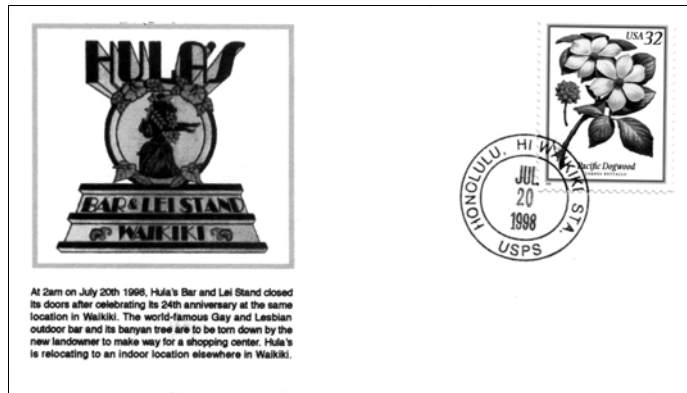
Gay, Lesbian, Bisexual, Transgender
Pride Festival Station
Baltimore, MD 21217
June 12, 1999

Baltimore Post Office will issue a commemorative postmark in honor of the 19th annual Pride Celebration for Baltimore on Saturday, June 12, 1999, from a temporary post office, Pride Festival Station, at Druid Hill Park, Baltimore, Maryland, from 12 Noon to 6:00 PM.

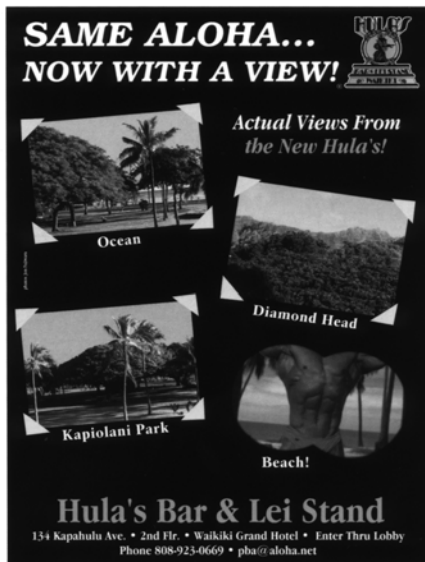
The unique postmark featuring the festival logo and this year's theme, A Proud Past, A Powerful Future, is free. It will be applied to any item bearing first-class postage. To order the postmark by mail, write to: Pride Festival Station, Main Office Window Services, US Postal Service, 900 East Fayette St., Baltimore MD 21233-9715. Enclose a self-addressed, stamped envelope for return. Mail order requests must be postmarked no later than July 12, 1999.

While Surfing the Web...

(These covers, plus many other Hawaii Historic Covers, can be found on the web at <http://www.stampshows.com/hhc.html>)



Last day cover from Hula's Bar & Lei Stand in Waikiki, Hawaii. The world-famous gay and lesbian outdoor bar closed its doors at 2 a.m. on July 20, 1998, after celebrating 24 years at the same location. Hula's has since relocated to an indoor location. A Hula's postcard with a last day postmark is also available.



After moving to a new location in Waikiki, Hula's Bar & Lei Stand re-opened on Friday, November 20, 1998. Patrons will miss dancing under the banyan tree, but will enjoy the view of the beach and Kapi'olani Park at the new location.

Great Britain Honors Alan Turing and Freddie Mercury In Their Millennium Series

By Joe Petronic
(Information obtained from the Royal Mail web site
and *Linn's Stamp News*.)

The January release of the first four of the 1999 Millennium stamps contained one stamp honoring the development of the computer. The computer has changed the way we live and work more than any other invention in the last century.

Automated calculation began with William Oughtred, who in 1622 invented the first slide-rule, based on mathematician John Napier's logarithms. English mathematician Charles Babbage realized that it should be possible to automate the process of calculation. On paper, he conceived of the "Analytical Engine". George Boole's invention of Boolean Algebra, which made it possible to define problems in terms of logic and condition, gave the paper "computer" a language. A new technology was needed. Early in the twentieth century, the invention of the vacuum tube and the beginnings of electronics was that needed technology.

In 1936, Alan Turing proposed a universal machine, capable of carrying out any calculation by following a stored program. Seven years later, he was able to try and build one. Turing, his colleagues and some Post Office engineers built an electronic machine called Colossus to help speed up automated code breaking. Colossus I became operational in December of 1943, and enabled the Allies to break the German Enigma codes. After the war, Turing helped to expand the facilities of the first operating electronic computer. He helped lay the groundwork for the concept of artificial intelligence.

Many contributed to the electronic computer's genesis. Alan Turing was the genius who provided the mathematical language. He committed suicide in 1954 during a bout of depression brought on by his earlier arrest for gross in-



decency.

Freddie Mercury was featured in the Millennium series released June 1, 1999. Mercury was the lead singer of the rock group Queen. His bisexuality became known upon his death from AIDS in 1991.

The stamp was issued to reflect the birth, and growth, of rock and roll and pop culture in the 1950s and 1960s. In the 1980s, rock and roll and pop merged in an historic event called Live Aid. Live Aid helped to raise countless pounds and an international awareness of Africa's famine-stricken poor. The stamp was designed by British artist, Peter Blake, who also designed the cover for the Live Aid record.

Upon its release, this stamp caused some controversy in England. The stamp shows Mercury's bare chest. Several felt that "stripped" persons should not be on Royal Mail stamps. In the background of the stamp, the drummer for Queen can be seen. Roger Taylor is still living, and only members of the British royal family can be depicted on stamps while alive. The final cause of controversy is that Mercury died of AIDS.

Royal Mail issued a statement that it backs the Mercury stamp, and that the queen also gave her approval.



Helpful Addresses

American Philatelic Society (APS)
PO Box 8000
State College PA 16803-8000

American Topical Association (ATA)
PO Box 50820
Albuquerque NM 87181-0820

American First Day Cover Society (AFDCS)
PO Box 65960
Tucson AZ 85728

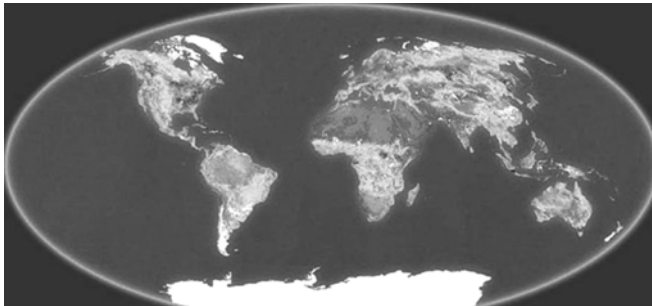


Gay & Lesbian Update

Queens Lesbian and Gay Pride once again had a pictorial cancellation for their Pride festivities. It was used on Sunday, June 6, 1999. This is their sixth cancellation. Copies can be obtained from:

Pictorial Cancellations
Queens Lesbian and Gay Pride Station
PO Box 9998
Flushing NY 11351-9998

Artwork will be printed in the next journal.



It's a GAY world...

Czech Republic issued three booklets on September 10, 1998. Good Soldier Schweik, Type of 1998. Scott nos. 3019a, 3020a and 3021a.

France released a set of two for the 50th Anniversary of the Universal Declaration of Human Rights. This set of two was issued on December 10, 1998. René Cassin, Eleanor Roosevelt and the Chaillot Palace in Paris are featured on Scott no. 2689.

France also issued a stamp on February 27, 1999 to celebrate the cultural heritage of Lebanon. A mosaic illustrating the transformation of Zeus into a bull is featured. Scott no. 2705.

French Polynesia issued a stamp for St. Valentine's Day on February 11, 1999. The image appears to be two women kissing. Scott no. 748.

Gambia issued two sheets of eight stamps and two souvenir sheets on October 12, 1998, depicting famous people of the 20th Century.

- Cole Porter, Scott no. 2050a
- "Born to Dance", by Porter, Scott no. 2050b.

- "West Side Story", by Bernstein, Scott no. 2050g.

- Leonard Bernstein, Scott no. 2050h.

Gambia released three sheets of eight stamps, plus three souvenir sheets on October 29, 1998. This set depicts paintings of Eugene Delacroix. Scott nos. 2083-2088.

Ghana issued a sheet of three stamps and a souvenir sheet on December 24, 1998 for the 19th World Scouting Jamboree. Lord Baden-Powell can be found on Scott no. 2082.

Gibraltar issued a set of four stamps on October 6, 1998, featuring quotations from famous people. "Love comforts like sunshine after rain", by Shakespeare can be found on Scott no. 770.

Great Britain released the first of the Millennium series for 1999 on January 12, 1999. This series began in 1998, and features British achievements during the past 1,000 years. The development of computers, and honoring Alan Turing, can be found on Scott no. 1842. (See related story on page 8.)

Grenada, on October 28, 1997, issued a set of seven stamps honoring tennis stars. Martina Navratilova can be found on Scott no. 2804.

Grenada Grenadines issued a sheet of eight stamps plus a souvenir sheet on September 15, 1998. Paintings of Eugene Delacroix are featured. Scott nos. 2052-2053.

Guyana issued three sheets of eight stamps and two souvenir sheets on October 29, 1998, featuring paintings by Eugene Delacroix. Scott nos. 3357-3360.

Italy released a stamp on June 29, 1998, for the 200th anniversary of the birth of Giacomo Leopardi, poet. Scott



no. 2222.

Kyrgyzstan issued a sheet of five stamps on December 4, 1998, for the 50th anniversary of the universal declaration of human rights. Eleanor Roosevelt can be found on Scott no. 119e.

Liberia issued a sheet of nine stamps plus a souvenir sheet on September 16, 1998, featuring children's stories. *The Princess and the Pea* by Hans Christian Andersen is on Scott no. 1354e.

Liberia released a sheet of stamps on October 26, 1998, to commemorate the 1998 World Scout Jamboree in Chile. Lord Robert Baden-Powell in Matabeleland, 1896, is featured on Scott no. 1371b.

Maldivé Islands issued a stamp on December 15, 1998, for the 1998 World Scout Jamboree in Chile. Robert Baden-Powell is featured on Scott no. 2329.

Mali issued three sheets of nine stamps each in 1998. These sheets feature different entertainers.

- Nine different portraits of James Dean can be found on Scott no. 978 (a-i).
- Greta Garbo is on Scott no 980b.

Marshall Islands issued a sheet of 12 stamps on February 1, 1999, honoring great American Indian chiefs. Sitting Bull can be found on Scott no. 699f. One of Sitting Bull's wives was a berdache.

Moldova issued a set of four stamps on February 22, 1997 featuring various composers. Franz Schubert can be found on Scott no. 232.

Nevis issued a sheet of eight stamps and two souvenir sheets on March 8, 1999, featuring world leaders of the 20th century.

- Franklin and Eleanor Roosevelt with the UN emblem are featured on Scott no. 1136e.
- the Roosevelts campaigning, a US GI are featured on Scott no. 1136f.

St. Vincent issued a sheet of three stamps and a souvenir sheet on September 15, 1998, for the 1998 World Scout Jamboree in Chile. Lord Robert Baden-Powell is featured on Scott no. 2640.

Sierra Leone issued two souvenir sheets on December 19, 1996, featuring fantasies of the sea, type of 1996. Poseidon is featured on Scott no. 1973.

Sierra Leone issued two sheets of four stamps plus

two souvenir sheets on December 15, 1998, for the 19th World Scouting Jamboree in Chile.

- Dan Beard, Baden-Powell are on Scott no. 2137a.
- Lord and Lady Baden-Powell are on Scott no 2139.

Sierra Leone issued a sheet of eight stamps plus a souvenir sheet in 1998, featuring paintings by Eugene Delacroix. Scott nos. 2150 and 2151.

United States released the 1940s Celebrate the Century sheet on February 18, 1999. One of the stamps honors *A Streetcar Named Desire*, written by Tennessee Williams. Scott no. 3186n.

Though not showing a lesbian, the image on Scott no. 3186e is popular among lesbians and feminists.



AIDS Update

Grenada issued a set of seven stamps on October 28, 1997, featuring tennis stars. Arthur Ashe can be found on Scott no. 2799.

Macedonia issued a postal tax stamp on December 1, 1997. It was for the Red Cross – AIDS and was obligatory on mail December 1 – 7, 1997. Scott no. RA95.

Wallis & Futuna Islands issued their second AIDS stamp on December 1, 1998, for the world fight against AIDS. Scott no. 516.



Last Lick



APS STAMPSHOW 99, the annual convention of the American Philatelic Society and the largest annual postage stamp show in the United States, will visit Cleveland, Ohio from August 26-29, 1999. The show will include 160 dealers, 600 frames of exhibits including the World Series of Philately, a first day ceremony for five locomotive stamps, approximately 100 society meetings and seminars, a cachet maker bourse, and the American Philatelic Society general and board meetings.

Special activities include a large interactive youth area, an adult beginner program, an area where a bucket of stamps may be purchased for only \$3 (\$1 for youth age 15 and under) and more than ten booths at which all stamps will sell for 10 cents or less and all covers for \$1 or less.

The entire show floor will be carpeted and chairs are included as part of the dealer booth packages. Admission will be free and door prizes will be awarded hourly.

Organizations who have already indicated that they plan to meet at the show include the American First Day cover Society; the Society of Czechoslovak Philately; Rossica; the Plate Number Coil Collectors Club; the American Plate Number Single Society; the American Topical Association; the Errors, Freaks and Oddities Collectors Club; Europa Study Unit; Fire Service in Philately; the Philatelic Society for Greater Southern Africa; the Philatelic Computing Study Group; the German Colonies Collectors Group; the Great Lakes Postal History Society; the International Society of Worldwide Stamp Collectors; the Maritime Postmark Society; Scouts on Stamps Society International; and the APS Writers Unit 30. In total, approximately 30 organizations are expected to participate.

Special rates have been negotiated with two hotels. Immediately adjacent to the Convention Center, the Sheraton City Centre will be the headquarters hotel. Reservations may be made by calling 216-771-7600 and asking for the American Philatelic Society STAMPSHOW rate which is \$115 single.

The APS also has a block of rooms at the Holiday Inn Lakeside City Center about three blocks from the show. These rooms are available at \$85/night for single to quad occupancy. Reservations may be made by calling 216-241-5100.

Continental, which has a hub in Cleveland, has been designated the official airline and is offering a discount of five percent off their lowest published fares (or ten percent if tickets are purchased more

than 60 days in advance). To make reservations, you or your travel agent must call the Continental Meeting Works department at 800-468-7022 and provide the STAMPSHOW meeting reference number NQWJ7D.

Avis will be the official rental car provider. Rates start at \$35.99/day or \$19.99/day for weekend rentals (Thursday through Monday). Call 800-331-1600 and provide Avis Worldwide Discount Number J097347.

The Rock and Roll Hall of Fame, the Great Lakes Science Center, Lake Erie, and the Cleveland Browns' new stadium are all within three blocks of the Convention Center. Jacob's Field, where the Indians play baseball, and the Flats Entertainment District, which features 60 restaurants and nightclubs along a river front boardwalk, are short cab rides from the Convention Center. Rail service is also available in the downtown area and from the airport.

The Cleveland Browns have a preseason home football game the weekend of STAMPSHOW. The Indians are also in town during the show. Because of this, attendees are encouraged to make their hotel reservations early!

Contact the APS at PO Box 8000, State College, PA 16803-8000, telephone 814-237-3803, fax 814-237-6128, for entry forms, meeting applications, hotel reservation cards, and answers to any other questions you may have. E-mail requests may be sent to kpmartin@stamps.org. Information should also be available from the APS web page at www.stamps.org.



The 1999 National Topical Stamp Show will be held July 30 – August 1, 1999 at the Sheraton Four Points – Milwaukee Airport Hotel in Milwaukee, Wisconsin. Milwaukee is the birthplace of ATA and is the ideal choice to celebrate the 50th anniversary of the ATA. Special hotel rates have been obtained. Please call 800-325-3535 to make reservations. Remember to ask for the ATA Topical Show rate.

For sale: Latin American stamps, FDC, pictorial postmarks on AIDS and persons depicted in the 1992 Handbook.

Easy payment, ATA member. You pay after receipt of order.

Bianco
PO Box 62-056
65000 Fray Bentos
URUGUAY

Always buying collections.

I buy everything...not just gay-related, but USA, worldwide, whatever...even cinderellas!

Robert W. Gesell
PO Box 8248
Ann Arbor MI 481007

E-mail: Rgesell3@juno.com
Phone: (734) 662-5460
APS member

WANTED:
Articles on your favorite gay, lesbian, bisexual or other philatelic topics to be included in future journals.

Submit to the editor at address on page 2.

LAST MINUTE DETAILS!

It appears that Syracuse, New York once again had a cancellation, this year on June 19, 1999. You should be able to request copies from:

US Postal Service
Downtown Station
444 South Salina St.
PO Box 9998
Syracuse NY 13202-9998

Or, you can purchase a bicolored cacheted cover franked with Fruit Berries stamp. \$2 each with one stamp, \$7.50 for set of four or \$3 for set of four on one cover. Include a self-addressed stamped envelope. Mail to:

Syracuse Pride Committee
Michael Casler
Box 208
Syracuse NY 13201